

Installation Guide Capgemini MDA Workbench

Capgemini MDA Workbench

Version control

Version	Date	Short description changes
0.1	September 25, 2006	Initial version
0.5	November 13, 2006	Updated

Name author(s): Leon Wubbe, Sybren de Hartog

Capgemini MDA Workbench

Installation Guide

Name author(s): Leon Wubbe

Company name: Capgemini N.V.
Place: Utrecht
Date: November 13, 2006

Table of Contents

1	Management summary	1
2	Installing the Workbench	2
<hr/>		
2.1	Overview	2
2.2	Installing Eclipse	2
2.3	Installing Eclipse dependencies	2
2.3.1	EMF, UML2 Features	2
2.4	Installing the MDA Workbench	3
2.4.1	MDA Resources plug-in	4
2.4.2	MDA Workbench	4
2.4.3	Verifying MDA Workbench Installation	4

1 Management summary

This document describes the installation of the MDA Workbench of Capgemini. The Workbench has been developed as an Eclipse plug-in.

The Workbench is capable of processing UML2 models. A requirement for this usage of the MDA Workbench is the Eclipse UML2 feature.

2 Installing the Workbench

2.1 Overview

The MDA Workbench is implemented as an Eclipse plug-in; installing the MDA Workbench is like installing any other Eclipse plug-in. There's no update site offered for the Workbench yet so installing the plug-in and its dependencies requires performing a number of actions manually.

These actions are described in some detail in this document.

2.2 Installing Eclipse

Point your favourite browser to <http://archive.eclipse.org/eclipse/downloads/> and download version 3.1 of the Eclipse SDK. Install Eclipse to e.g. C:\Program Files\eclipse. The MDA Workbench has been verified with version 3.1 (and its subversions) of Eclipse.

The Workbench can be made to work with version 3.2 but care has to be taken so that the proper versions of the required EMF and UML2 features are installed. The default installation of Eclipse 3.2 is provided with newer and incompatible versions of these features.

The MDA Workbench will not work with version 3.0 of Eclipse.

2.3 Installing Eclipse dependencies

The MDA Workbench requires the EMF and UML2 features as well as the MDA Resources plug-in. The MDA Workbench cannot be installed successfully without these dependencies being installed first.

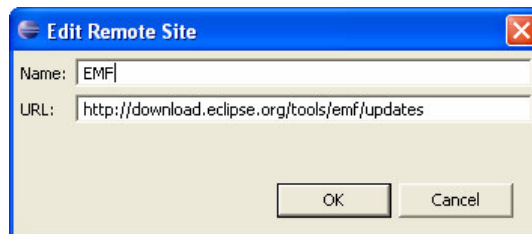
2.3.1 EMF, UML2 Features

To install the EMF and UML2 features into Eclipse use the respective update sites of these features. The URLs of these features are:

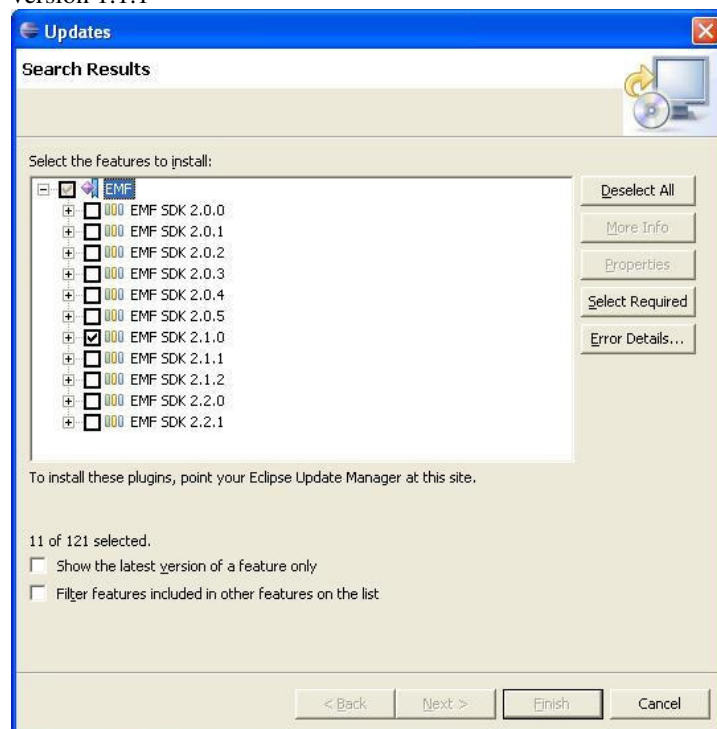
- <http://download.eclipse.org/tools/emf/updates>
- <http://download.eclipse.org/tools/uml2/updates>

To configure a new update site in Eclipse:

- Open Help | Software Updates | Find and Install... .
- Select the option Search for new features to install
- Create a New Remote Site and refer to the feature's update site URL's (above)
Example:



- Check the remote site thus created and select Finish
- Select an update (mirror) site
- Select the proper version of the feature by deselecting 'Show the latest version...', expanding the feature and selecting the right version. The MDA Workbench has been verified with EMF version 2.1.0 and UML2 version 1.1.1



- Accept the license agreements and click 'next'
- Finish the wizard
- Select 'Install All' and after installation, restart Eclipse with the clean option (eclipse.exe -clean)

2.4 Installing the MDA Workbench

2.4.1 MDA Resources plug-in

- To install the MDA Resources plug-in, point your browser to <http://sourceforge.net/projects/mda-workbench/> and go to the download section.

The resources plug-in is in the MDA Workbench package.

- Download the (latest version of) the MDA Resources plug-in (com.capgemini.mda.resources_X.X.X.zip, where X.X.X is the version number).
- Extract it into the Eclipse folder (e.g. C:\Program Files\eclipse) (the zip already contains the plugin folder)

The MDA Resources plug-in registers two sets of UML2 profiles commonly used in domain modelling. To view these profiles, import the sources of this plug-in and open the profiles contained therein. With the UML2 feature installed, double-clicking a UML2 profile will open this profile in a tree editor.

2.4.2 MDA Workbench

- To install the MDA Workbench plug-in, point your browser to <http://sourceforge.net/projects/mda-workbench/> and go to the download section.

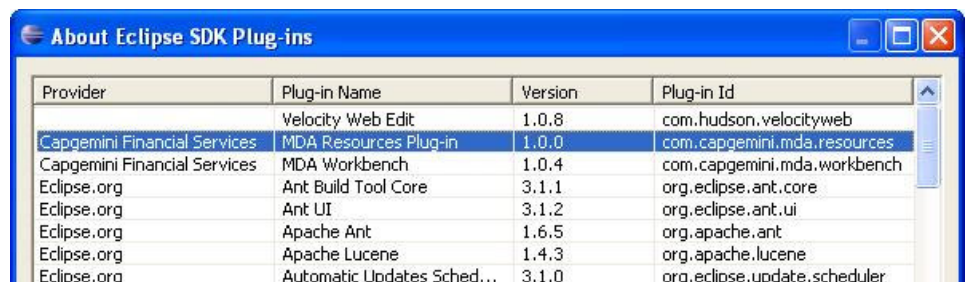
The MDA Workbench plug-in is in the same MDA Workbench package as the MDA Resource plug-in.

- Download the (latest version of) the MDA Workbench plug-in (com.capgemini.mda.workbench_X.X.X.zip, where X.X.X is the version number).
- Extract it into the Eclipse folder (e.g. C:\Program Files\eclipse) (the zip already contains the plugin folder)

2.4.3 Verifying MDA Workbench Installation

To verify that the MDA Workbench has been installed properly:

- Open Help | About Eclipse SDK | Plug-in Details
- Verify that both the MDA Workbench and the MDA Resources plug-in are listed



Provider	Plug-in Name	Version	Plug-in Id
	Velocity Web Edit	1.0.8	com.hudson.velocityweb
Capgemini Financial Services	MDA Resources Plug-in	1.0.0	com.capgemini.mda.resources
Capgemini Financial Services	MDA Workbench	1.0.4	com.capgemini.mda.workbench
Eclipse.org	Ant Build Tool Core	3.1.1	org.eclipse.ant.core
Eclipse.org	Ant UI	3.1.2	org.eclipse.ant.ui
Eclipse.org	Apache Ant	1.6.5	org.apache.ant
Eclipse.org	Apache Lucene	1.4.3	org.apache.lucene
Eclipse.org	Automatic Updates Sched...	3.1.0	org.eclipse.update.scheduler

You now have the MDA Workbench and its necessary tools successfully installed.



About Capgemini and the Collaborative Business Experience

Capgemini, one of the world's foremost providers of Consulting, Technology and Outsourcing services, has a unique way of working with its clients, called the Collaborative Business Experience.

Backed by over three decades of industry and service experience, the Collaborative Business Experience is designed to help our clients achieve better, faster, more sustainable results through seamless access to our network of world-leading technology partners and collaboration-focused methods and tools. Through commitment to mutual success and the achievement of tangible value, we help businesses implement growth strategies, leverage technology and thrive through the power of collaboration. Capgemini employs approximately 60,000 people worldwide and reported 2004 global revenues of 6.3 billion euros.

The Capgemini Group is headquartered in Paris.

www.capgemini.com