



**acafe**

**Hospital and Emergency**

computer aided decision support

# ACAFE dB update

# Installation Guide

---

## Overview

This document provides a detail description of how to update and reconfigure an existing installation of ACAFE on the network.

I.	System requirements:.....	3
II.	Assumptions: .....	3
III.	Update the database: .....	3

## I. System requirements:

OS	Windows XP SP2 or Windows 2003 Server
Services & Soft wares	- IIS (Internet Information Services) - Microsoft .NET Framework 2.0 - MS SQL Server 2005 Express - Crystal report modules

## II. Assumptions:

This document assumes an existing version of ACAFE is running on the network. Below is a checklist to confirm the location of the preinstalled components.

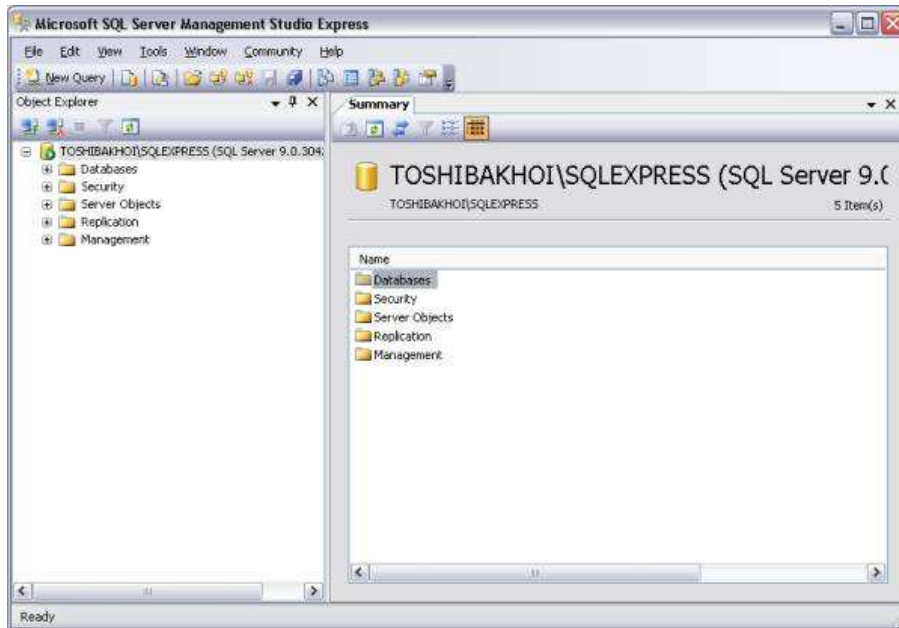
Installed	Windows XP SP2 or Windows 2003 Server - IIS (Internet Information Services) - Microsoft .NET Framework 2.0 - MS SQL Server 2005 Express - Crystal report modules
How to confirm	Current intranet ACAFE located at <a href="http://localhost">http://localhost</a> or equivalent  If link opens the ACAFE system, then all above components have been preinstalled successfully. .

## III. Update the database:

1. Go to **Start** → **All Programs** → and find **Microsoft SQL 2005**. Click on the application **SQL Server Management Studio Express**.
2. When the application loads up, you should see the following screen below. Leave all the options as default however use the **login:** acafe and **password:** acafe. (or default login set during installation)

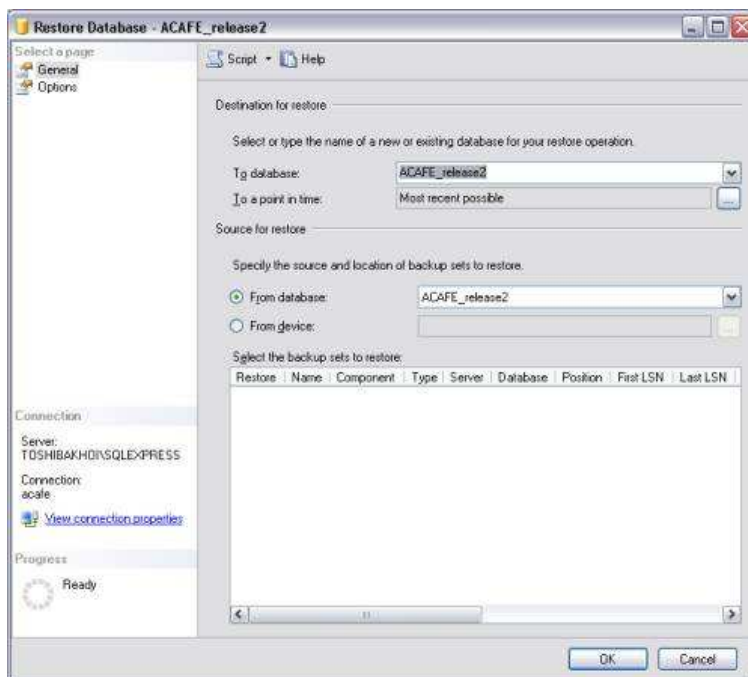


3. If login and password successful, you will be taken to the ACADE database records. The screen should look similar to the figure below.

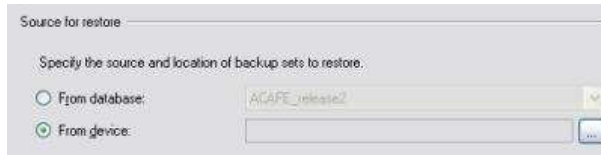


4. On the left hand side click on **Database** and this will expand the tree to show the names of the databases installed. One of the db installed should be named **ACAFE\_release2**.

Right click the **ACAFE\_release2** database and select **Tasks → Restore → Database**, completing this will show the screenshot below.



5. On the left hand side column there are two options “General” and “Options”. Ensure that the selected page you are on is “General”. Go to the right hand side in the middle of the page there is an option “Source for restore”. Select **From Device** and then click on the browse box to select the file to restore:



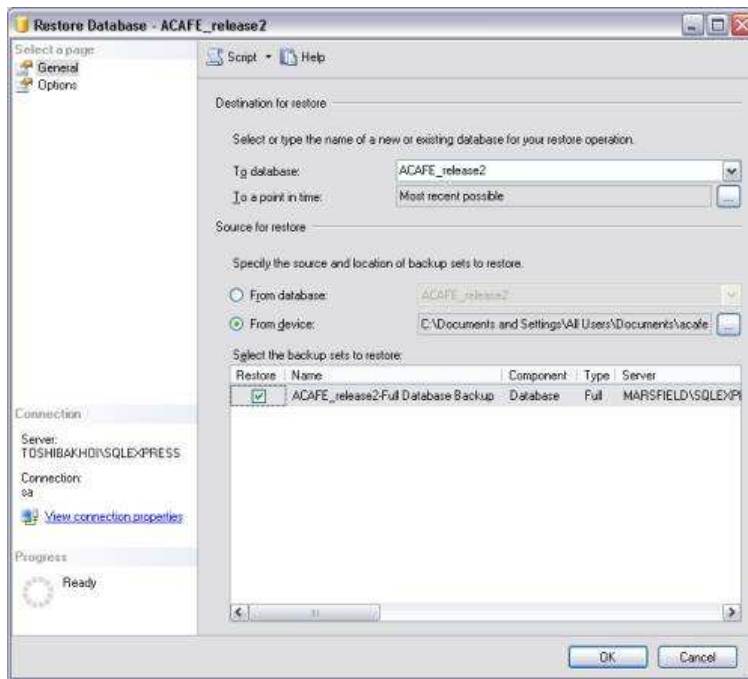
6. You will need to specify your backup file location by clicking on the “Add” button



Use the directory tree screen which appears after clicking “add” to locate the **acafe.bak** file which you have saved on your hard drive or other media device.

After you have added the file, click on **OK**. You will be taken back to the original restore page.

- At the restore page, you will see the file backup under the section “Select the backup sets to restore”. Select the checkbox for this file → click on **OK**.



After you click ok, this will execute the database restore process. If the update has been successful you should get the “Successful” confirmation pop up page.



- You have now completed the update for the database.